

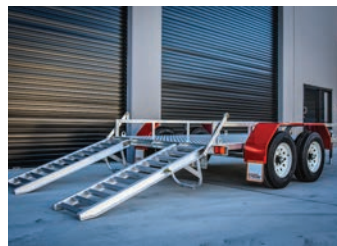
## SKID STEER TRAILERS

# 3.5T SKID STEER

## 3.5 Ton



The All-Tow Skid Steer Trailer is built to suit machines with an **operating weight of 2660kg or less including bucket.**



### SPECIFICATIONS

- » ATM: 3500Kg
- » Chassis Main Beam Size: 125mm x 65mm x 8mm PFC
- » Trailer Weight: 880Kg
- » Trailer OA Length: 5400mm
- » Trailer OA Width: 2450mm
- » Distance Between Guards: 1800mm
- » Number of Axles: 2
- » Axle Type: 65mm x 65mm
- » Wheel Size: 16" Light Truck (Load Rated)
- » Stud Pattern: LC
- » Lighting: LED Lights 12/24
- » Chassis Assembly: Welded
- » Stand Up Ramp Length: 1455mm
- » Stand Up Ramp Width: 500mm
- » Stand Up Ramps Fixed or Adjustable
- » Brake Type: 12" Electric Braked
- » Suspension: AL-KO Rock Roller
- » Hitch 50mm Ball

### FEATURES

- » Galvanised Steel Subframe
- » Full Aluminium Deck
- » Aluminium Ramps
- » Powder Coated Guards
- » Plug 'n' Play Lights
- » Fixed Drawbar

**CUSTOM MADE TRAILERS**  
Proudly Built  
in **Australia**



#### Site Address

22 Blue Rock Drive,  
Yatala, QLD 4207 Australia

#### Postal Address

PO Box 1049  
Oxenford, QLD 4210

#### Contact Details

P: 1300 611 301 | M: 0434 615 495  
E: sales@alltradetrailers.com.au

