

ALLTRADES



TRAILERS

YOUR EQUIPMENT OUR SOLUTIONS

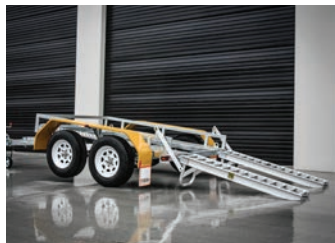
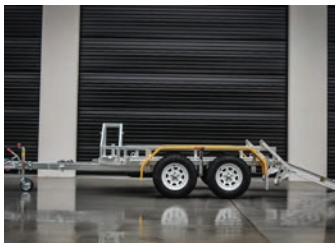
Ph: 1300 611 301

EXCAVATOR TRAILERS

ALL-TOW 2800

2.8 Ton

The All-Tow 2800 Trailer is built to suit machines with an **operating weight of 2300kg or less including buckets.**



SPECIFICATIONS

- » ATM: 2800Kg
- » Chassis Main Beam Size: 100mm x 50mm x 4mm
- » Trailer Weight: 500Kg
- » Trailer OA Length: 4200mm
- » Trailer OA Width: 2120mm
- » Distance Between Guards: 1550mm
- » Number of Axles: 2
- » Axle Type: 50mm x 50mm Hollow
- » Wheel Size: 14" Light Truck (Load Rated)
- » Stud Pattern: Ford
- » Lighting: LED Lights 12/24
- » Chassis Assembly: Welded
- » Stand Up Ramp Length: 1455mm
- » Stand Up Ramp Width: 370mm
- » Stand Up Ramps Fixed
- » Brake Type: 10" Electric Braked
- » Suspension: AL-KO Rock Roller
- » Hitch 50mm Ball

FEATURES

- » Galvanised Steel Subframe
- » Aluminium Deck
- » Aluminium Ramps
- » 400mm Track Deck
- » Powder Coated Guards
- » Plug 'n' Play Lights
- » (TILT Trailer)

Optional Extras

- » Drill Holders
- » Auger Driver Holder
- » Hammer Rack
- » And More

CUSTOM MADE TRAILERS

Proudly Built
in Australia



Site Address

22 Blue Rock Drive,
Yatala, QLD 4207 Australia

Postal Address

PO Box 1049
Oxenford, QLD 4210

Contact Details

P: 1300 611 301 | M: 0434 615 495
E: sales@alltradetrailers.com.au

